



# Belstone Village Hall Accessibility Statement

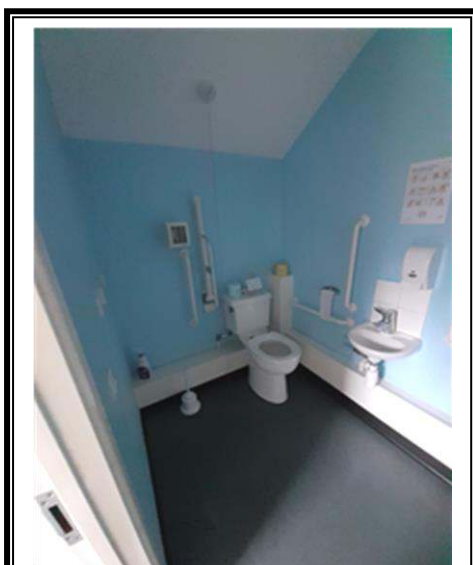
## Our Vision

Belstone Village Hall is at the heart of our community. The Committee aim to provide an accessible and inclusive environment to all our user groups, and we are continually seeking to improve our facilities both inside and outside. This access statement is our first step in capturing the significant progress so far; we also recognise we need to build on our facilities for the future.

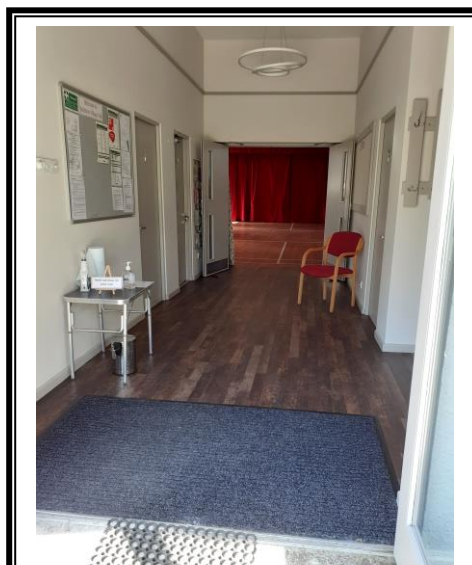
We continue to seek feedback from our residents, user groups and professionals. We welcome your suggestions and support.

## Accessibility Facilities:

- ✓ **Two fully accessible ground floor disabled toilets (*M Regs Compliant*).**
- ✓ **Baby changing facilities.**
- ✓ **Level access throughout interior of the hall, meeting room and foyer.**
- ✓ **Ground floor Meeting Room - with doors from exterior >80cm width.**
- ✓ **Concrete ramped access to main entrance, and paved level access to rear.**
- ✓ **Free Parking directly opposite, with one bay outside main entrance.**
- ✓ **Detailed access statement with door widths, room sizes etc is available on request or download @: [www.belstonevillage.net/village-hall](http://www.belstonevillage.net/village-hall)**

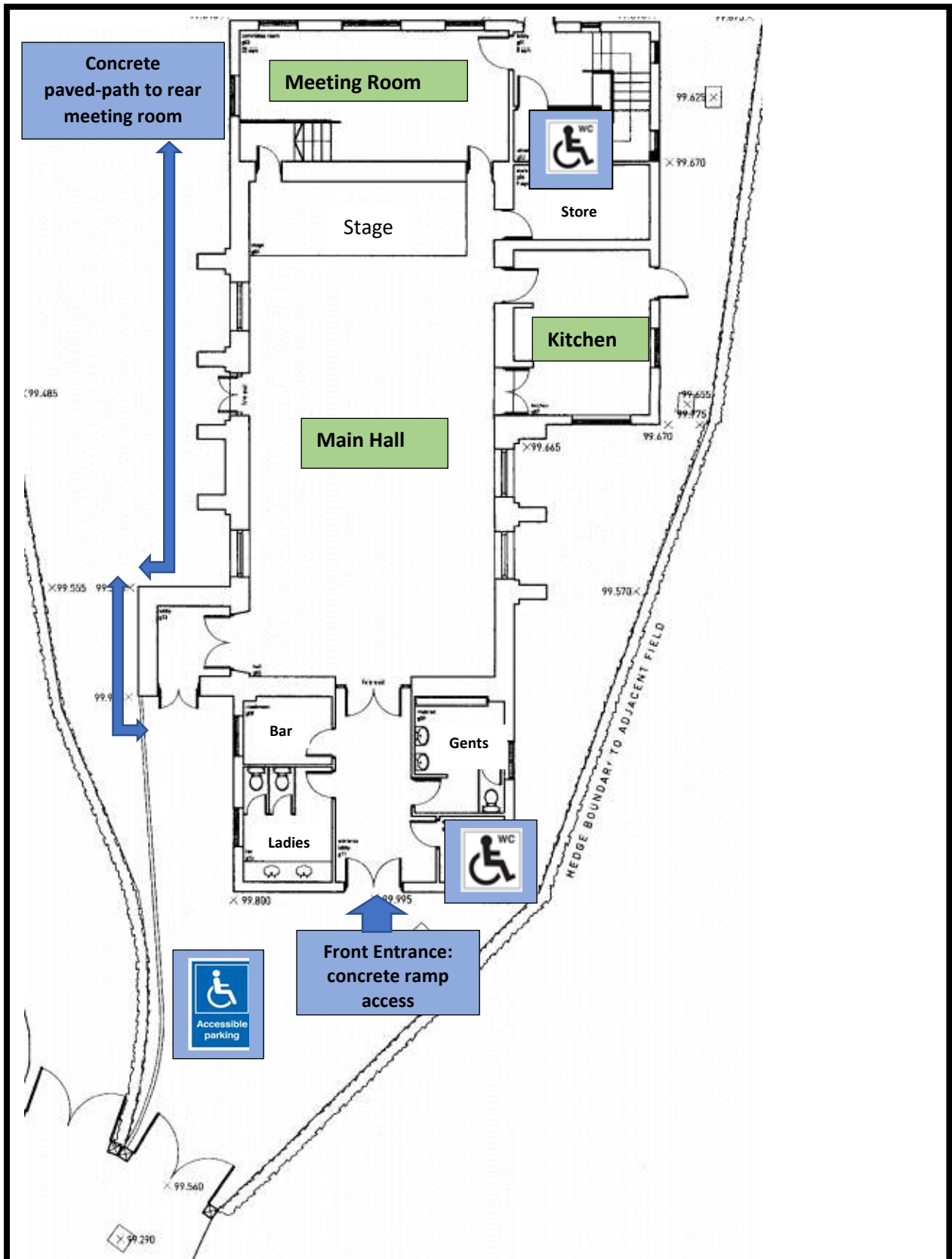


WC adjacent to rear meeting room



Front entrance into main hall

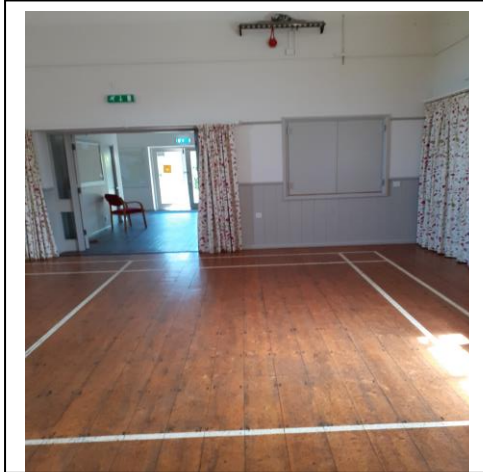
## Belstone Village Hall Floor Plan & Exterior Perimeter



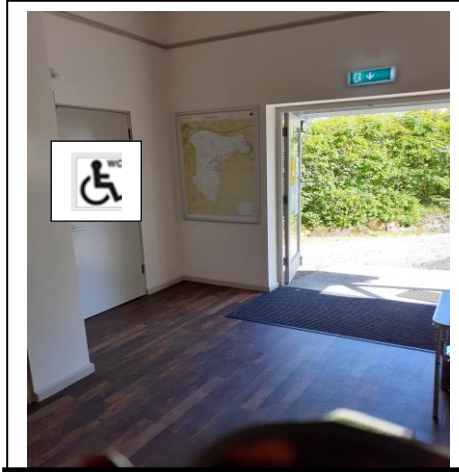
To Village Car Park ↓



## Belstone Village Hall: Detailed Access Statement



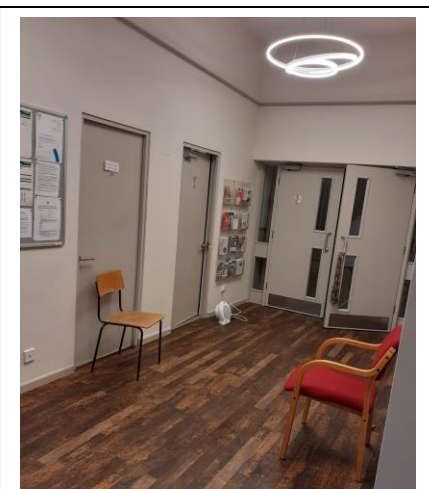
Main Hall toward front entrance; showing serving hatch for bar.



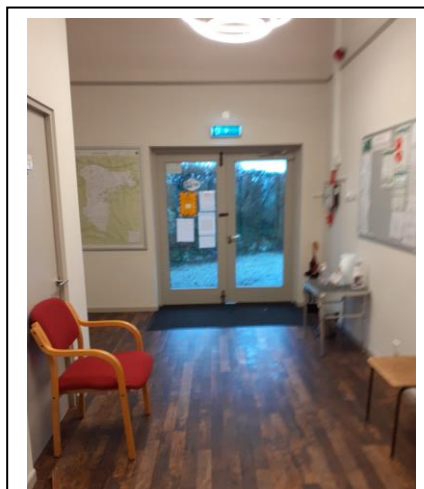
Front entrance looking from Main Hall, disabled toilet marked left of photo.

### Arrival and main entrance:

- ✓ A single vehicle parking area is in front courtyard; by prior arrangement this can be reserved.
- ✓ Free car parking is also available directly opposite the hall (capacity about 40 cars); this is a rough stoned, unfinished, level surface (no steps/ lipped kerb); leading directly opposite to a tarmac, single-track lane across to the Hall courtyard.
- ✓ A rough gravel slope leads from the lane to a heavy wooden double-farm gate. The entrance courtyard has a gravel path gently sloping up to the entrance, with concrete ramp into foyer.
- ✓ Entrance foyer has level access; double wooden doors opening 1.5 metres wide.



Front Entrance Lobby looking to Main Hall doors



Front Entrance Lobby Looking from Main Hall Doors

## Main hall:

- ✓ This is principally accessed via wooden double fire-doors from main entrance foyer (1.5 metres wide); level access throughout, no threshold.
- ✓ Main hall has wooden suspended floor; hall dimensions 7.5metres wide x 12.75 long (to edge of stage).
- ✓ An alternative side entrance / fire exit via double wooden doors 1.2 metres wide leading to a concrete paved path leading around the perimeter to front.
- ✓ A bar and kitchen serving hatch enabling service from within the Hall (both standing height).



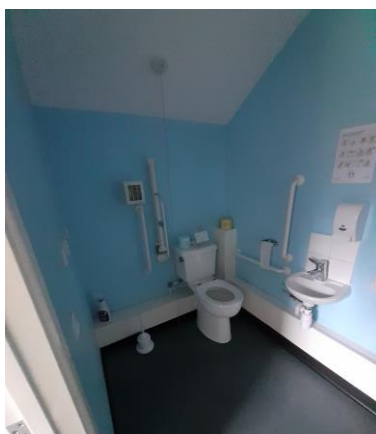
**Main Hall towards stage**



**Main Hall from rear showing perimeter path, and rear entrance.**

## Disabled toilet and welfare facilities:

- ✓ The hall has two Disabled Toilets compliant with M Regs, one in the Main Entrance Foyer, and one in rear Entrance Foyer, directly adjacent to the Rear Meeting room.
- ✓ The Disabled Toilets do not require a Radar key for access. Both have doors which open outwards with interior grab bar.
- ✓ The main entrance toilet has a baby-changing unit.



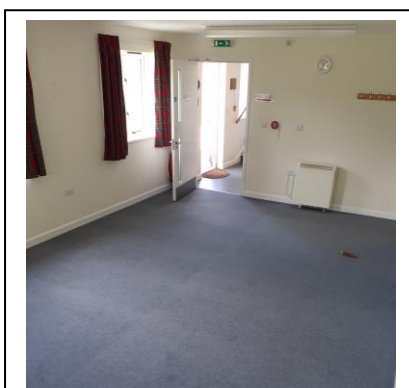
**Disabled Toilet: Rear Meeting room lobby. 1.5 w x 2.9 mt long**



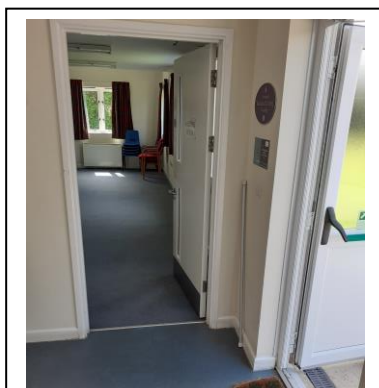
**Disabled Toilet / Baby Changing Front lobby. 2.0 w x 2.2 mt long**

## Ground floor meeting room and rear access:

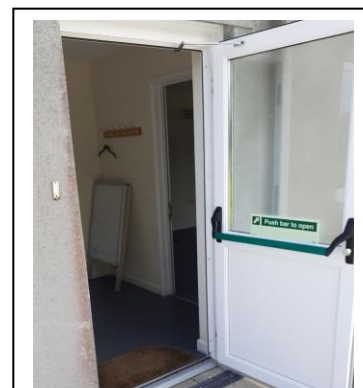
- ✓ The rear entrance is accessed via a level concrete-paved path around the perimeter.
- ✓ The rear entrance door is a UPVC fire door with bar handle (83cm wide), no step, level access into the meeting room foyer and meeting room adjacent.
- ✓ The meeting room has a wooden 84cm fire door. The room is 3.7 wide x 7.5 metres long, with free standing tables and plastic chairs. There are a limited number of fabric padded chairs with arms available.
- ✓ Access into main hall from the meeting room is slightly restricted with a narrow door 72cm wide, but level (i.e. no threshold).



Ground Floor meeting room looking toward foyer



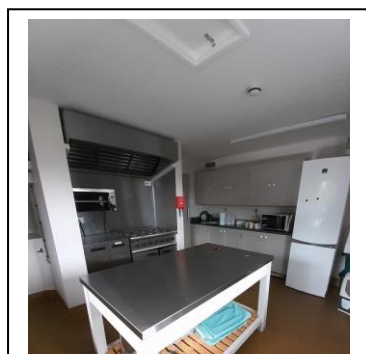
Rear Entrance Foyer level access into meeting room



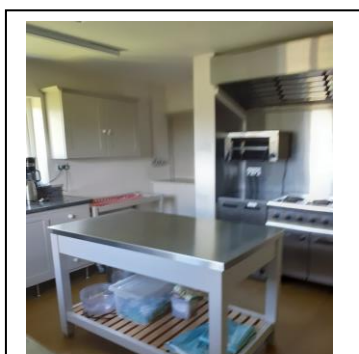
Rear Entrance from path (approx. 83cm wide)

## Kitchen: *The kitchen is not suitable for wheelchair users.*

- ✓ The interior Kitchen door from Main Hall is a level access, wooden fire-door, 76cm wide.
- ✓ Worktop/cooker heights are standard 90cm, with eye level cupboards, the central island restricts movement. The kitchen is fully equipped for catering, with double sized catering oven, and a serving hatch into main hall.
- ✓ Kitchen rear access is not suitable for wheelchairs. The rear entrance door is served by a UPVC 79cm door, level access to outside onto turfed path around the hall perimeter.



Fully equipped Kitchen



Fully equipped Kitchen