



Belstone Village Hall Accessibility Statement

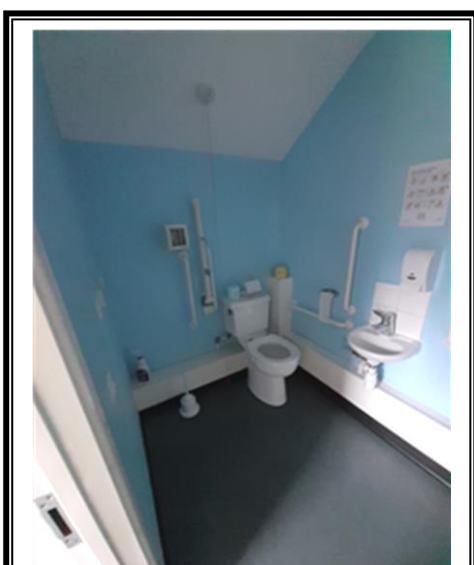
Our Vision

Belstone Village Hall is at the heart of our community. The Committee aim to provide an accessible and inclusive environment to all our user groups, and we are continually seeking to improve our facilities both inside and outside. This access statement is our first step in capturing the significant progress so far; we also recognise we need to build on our facilities for the future.

We continue to seek feedback from our residents, user groups and professionals. We welcome your suggestions and support. We have made every effort to ensure these details are accurate, however we would be grateful if you would notify us if you find any inaccuracies. Thank you.

Accessibility Facilities:

- ✓ **Two fully accessible ground floor disabled toilets (*M Regs Compliant*).**
- ✓ **Baby changing facilities.**
- ✓ **Recently fitted T Hearing Loop in both main hall and meeting room.**
- ✓ **Level access throughout the ground floor: main hall, meeting room and foyer.**
- ✓ **Tarmac forecourt to main entrance (with no threshold); paved level access to rear.**
- ✓ **Free Parking directly opposite, with one parking bay outside main entrance.**
- ✓ **Detailed access statement with door widths, room sizes etc is available on request or download @: www.belstonevillage.net/village-hall**

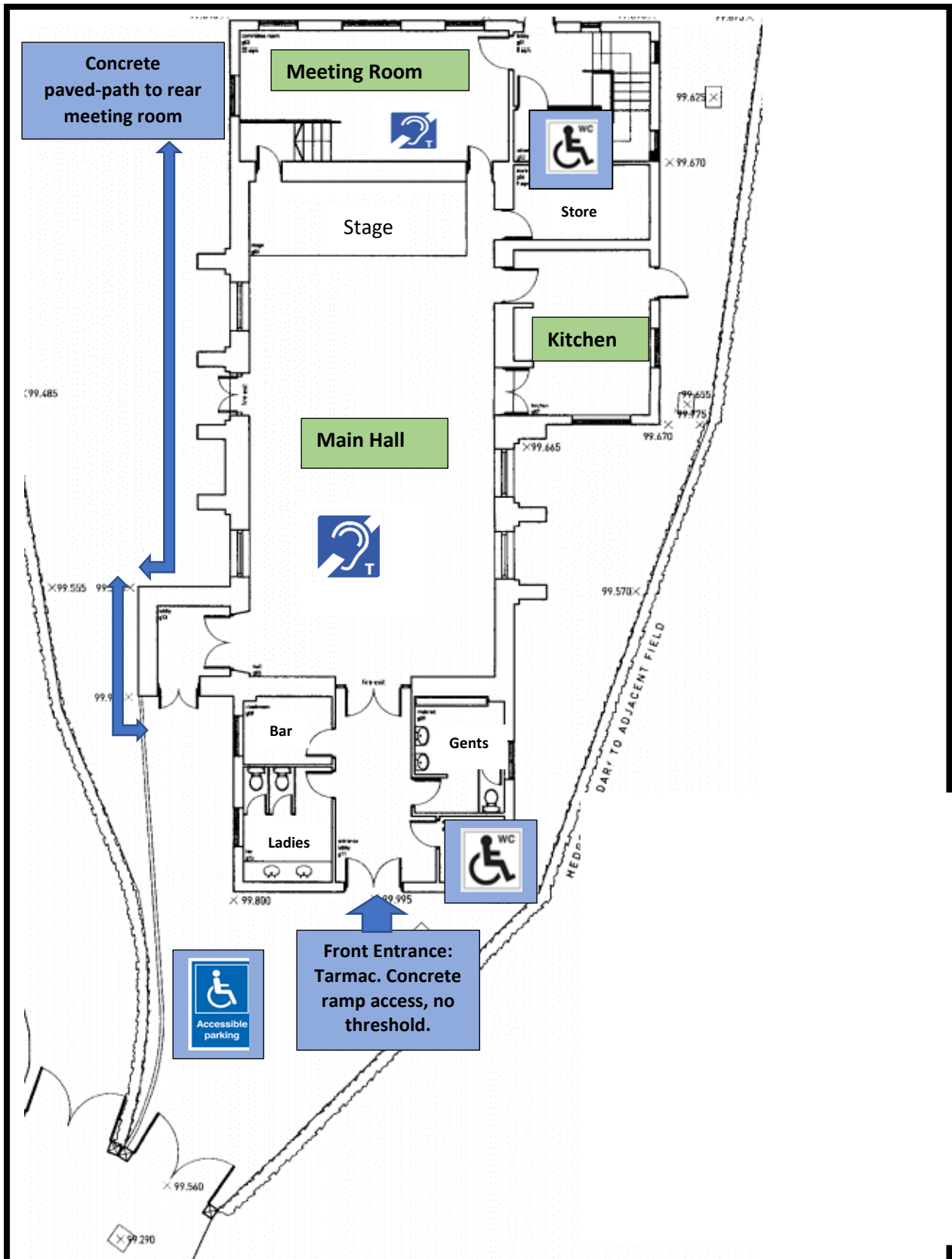


WC adjacent to rear meeting room



Front entrance into main hall

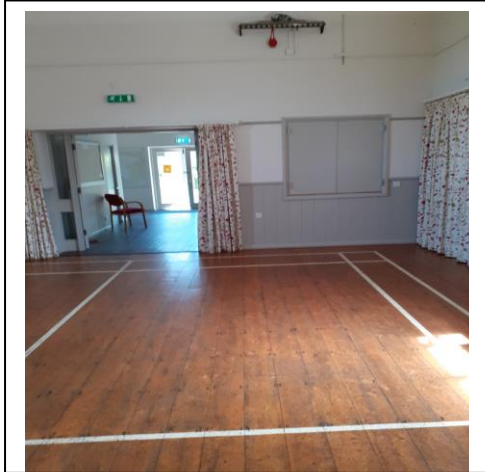
Belstone Village Hall Floor Plan & Exterior Perimeter



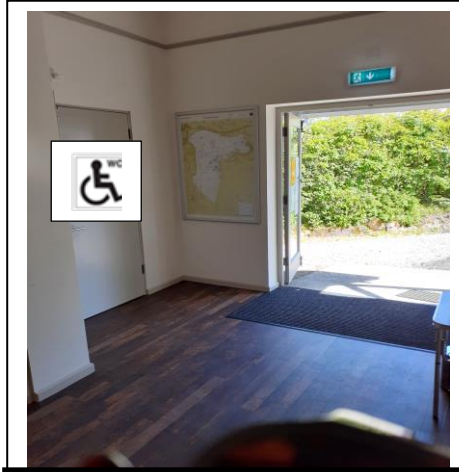
To Village Car Park ↓



Belstone Village Hall: Detailed Access Statement



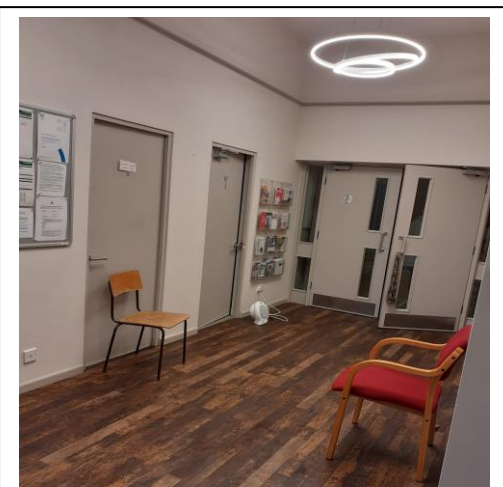
Main Hall toward front entrance; showing serving hatch for bar.



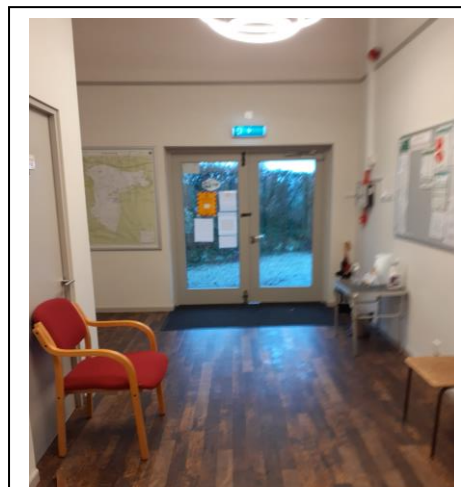
Front entrance looking from Main Hall, disabled toilet marked left of photo.

Arrival and main entrance:

- ✓ A single vehicle parking area is in front courtyard; by prior arrangement this can be reserved.
- ✓ Free car parking is also available directly opposite the hall (capacity about 40 cars); this is a rough stoned, unfinished, level surface (no steps/ lipped kerb); leading directly opposite to a tarmac, single-track lane across to the hall courtyard.
- ✓ A tarmac slope leads from the lane to a heavy wooden double-farm gate. The entrance courtyard is tarmacked, gently sloping up to the entrance, with concrete ramp to foyer.
- ✓ Entrance foyer has level access; double wooden doors opening 1.5 metres wide.



Front Entrance Lobby looking to Main Hall doors



Front Entrance Lobby Looking from Main Hall Doors

Main hall:

- ✓ This is principally accessed via wooden double fire-doors from main entrance foyer (1.5 metres wide); level access throughout, no threshold.
- ✓ Main hall has wooden suspended floor; hall dimensions 7.5metres wide x 12.75 long (to edge of stage).
- ✓ An alternative side entrance / fire exit via double wooden doors 1.2 metres wide leading to a concrete paved path leading around the perimeter to front.
- ✓ A bar and kitchen serving hatch enabling service from within the Hall (both standing height).
- ✓ T Loop fitted and full PA /Microphone system.



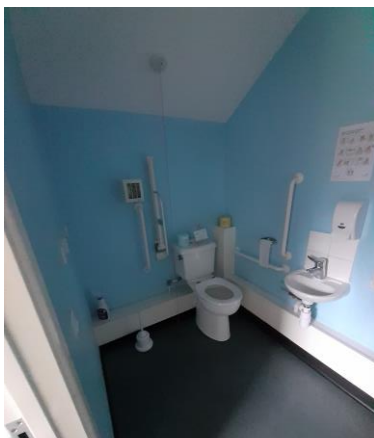
Main Hall towards stage



Main Hall from rear showing perimeter path, and rear entrance.

Disabled toilet and welfare facilities:

- ✓ The hall has two disabled toilets compliant with M Regs, one in the main entrance foyer, and one in rear entrance foyer, directly adjacent to the rear meeting room.
- ✓ The disabled toilets do not require a Radar key for access. Both have doors which open outwards with interior grab bar.
- ✓ The main entrance toilet has a baby-changing unit. A wheelchair is provided for hirer's use.



Disabled Toilet: Rear Meeting room lobby. 1.5 w x 2.9 mt long



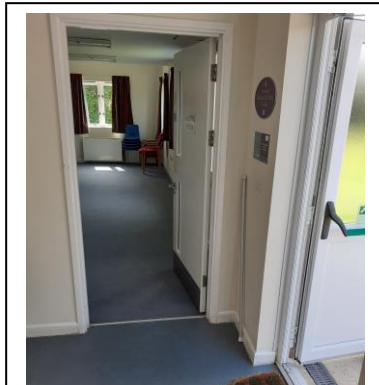
Disabled Toilet / Baby Changing Front lobby. 2.0 w x 2.2 mt long

Ground floor meeting room and rear access:

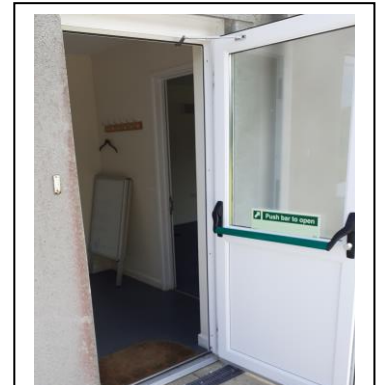
- ✓ The rear entrance is accessed via a level concrete-paved path around the perimeter.
- ✓ The rear entrance door is a UPVC fire door with bar handle (83cm wide), no step, level access into the meeting room foyer and meeting room adjacent.
- ✓ The meeting room has a wooden 84cm fire door. The room is 3.7 wide x 7.5 metres long, with free standing tables and plastic chairs. There are a limited number of fabric padded chairs with arms available. T Loop fitted.
- ✓ Access into main hall from the meeting room is slightly restricted with a narrow door 72cm wide, but level (i.e. no threshold).



Ground Floor meeting room looking toward foyer



Rear Entrance Foyer level access into meeting room



Rear Entrance from path (approx. 83cm wide)

Kitchen: *The kitchen is not suitable for wheelchair users.*

- ✓ The interior kitchen door from main hall is a level access, wooden fire-door, 76cm wide.
- ✓ Worktop/cooker heights are standard 90cm, with eye level cupboards, the central island restricts movement. The kitchen is fully equipped for catering, with double sized catering oven, and a serving hatch into main hall.
- ✓ Kitchen rear access is not suitable for wheelchairs. The rear entrance door is served by a UPVC 79cm door, level access to outside onto turfed path around the hall perimeter.



Fully equipped Kitchen



Fully equipped Kitchen